

# OVERVIEW AND SCRUTINY

## Annual Report 2014-15



# Contents

1.	Introduction.....	3
2.	Adult Social Care and Health Overview and Scrutiny Committee .....	5
3.	Children and Young People Overview and Scrutiny Committee.....	10
4.	Communities Overview and Scrutiny Committee .....	14
5.	Corporate Services Overview and Scrutiny Committee .....	17
6.	Meet the Members .....	20
7.	Looking Ahead.....	22
8.	Getting Involved .....	23

# 1 Introduction

Welcome to Warwickshire County Council's Overview and Scrutiny Annual Report for 2014/15. The report provides a snapshot of the positive work that each of the four Overview and Scrutiny Committees (OSCs) have achieved throughout the year. As well as providing a 'check and balance' for decisions taken by the Cabinet, the OSCs have a vital role in helping the Council to achieve its corporate ambitions and goals. Through the review and appraisal of services throughout the year, the OSCs have been able to identify potential areas for improving and strengthening Council policies and procedures in order to deliver positive outcomes for the public.

## **Some of the key achievements to highlight include:**

- The work of the five Quality Accounts Task and Finish Groups which focus on patient experience of quality in hospital and mental health services. This work has been acknowledged by the NHS Trusts as being a valuable exercise and has been identified both regionally and nationally as good practice. Clear improvements to patient care have been delivered as a result of the members' recommendations
- A Task and Finish Group review took place of Safer Routes to Schools and 20mph Safety Initiatives. The Group established criteria to determine where funding would be allocated, to improve the safety of children both travelling to school and in the immediate vicinity of schools. The resultant report was approved with minor modifications by the Cabinet.
- A detailed review of a child's transition between different stages and level of mental health services, with a specific focus on the challenges and pressures that the interim stages place on both the child and their parents or carers. By engaging directly with young people, and involving a range of stakeholders and youth groups, the review identified a series of recommendations for commissioners, providers, Cabinet and the Health and Wellbeing Board to consider, as well as feeding into the ongoing service redesign which has been running parallel to this piece of work.
- The review of the County Council's school admission arrangements and whether the introduction of Super Priority Areas could address the issue of sibling displacement. A detailed review of the principle and feasibility of establishing priority areas across urban areas was undertaken and a number of recommendations directed the Cabinet's future policy direction in respect of this issue.

Also this year, the Overview and Scrutiny Committees carried out a different approach to the annual review of their work programmes. Using a ‘scrutiny café’ format, the Committees held a joint event and were supported by Cabinet members and senior officers in identifying key priorities for the coming year. Members of all parties had the opportunity to comment, make suggestions and indicate priority issues against each of the Council’s five corporate aims.



To conclude, sincere thanks go to the elected members, officers, partners and members of the public who have contributed to the scrutiny process during the past year, in particular the Councillors who have volunteered their time to participate in the scrutiny reviews and Task and Finish Groups.

*“Overview & Scrutiny should play a key and substantive role as a check and balance in the County Council. Last Autumn’s Corporate Peer Review recognised this, concluding that: “on Overview and Scrutiny there are some positives to note, including stakeholders feeling listened to, the development of joint working... and on a practical level, scrutiny chairs encouraging other members to attend and engage.”*

*Task and Finish Groups also make an important contribution to democracy in Warwickshire, evidenced in the recent Cabinet approval of recommendations made by the Transitions of Mental Health Services Task and Finish Group. The commitment and contribution of these groups is greatly valued.*



*As a Council, we need to make Overview & Scrutiny work for everyone, strengthening democracy while improving services and decisions for Warwickshire residents we represent. Wherever Overview & Scrutiny are involved, the added-value they contribute to this process is important.”*

**Councillor Izzi Seccombe**  
**Leader of Warwickshire County Council**



## 2

# Adult Social Care and Health Overview and Scrutiny Committee

The membership of this Committee was almost completely changed in May 2014 and the new Committee has continued to manage a challenging workload whilst having to familiarise itself with the ongoing changes to the core structure of the NHS and the changes within the County in moving towards becoming a commissioning authority.

The guidance explaining the Health and Social Care Act 2012 regulations and policy background for the scrutiny of local health services was published in June 2014, including the role for Health scrutiny in taking an overview of how well integration of health, public health and social care is working, including how the Health and Wellbeing Board is carrying out its duty to promote integration. Over the past year the Committee has considered a range of issues within that context on NHS service delivery, public health and adult social care both to continue to develop its knowledge of services and to keep a focus on patient safety and quality of services.



## Adult Social Care

The Committee worked closely with the lead officers of the People Group, both informally to address local concerns that have been raised with members, but also to receive advice and guidance on the challenges facing the Council. This working relationship has been an important one over the past year with the enactment of the Care Act, and the introduction of the Better Care Fund, which will use pooled Health and Social Care money to improve early intervention and to avoid hospital admissions.

### Key outcomes:



- Monitored the redesign of Housing Related Support Services and will, if necessary, hold a special meeting to scrutinise the proposals that are being prepared following the public consultation. This is a high priority for the Committee to ensure that there is not an increased risk to the public or to the authority.
- Tracked service performance, including the People Group Annual Review 2013/14, a report on Adult Social Care Complaints and Compliments and quarterly reports on progress against the One Organisational Plan.

## Public Health

The Committee received regular advice and updates from the Director of Public Health and his staff and have supported the integration of Public Health into the Council. The Committee received the Annual Report of the Director of Public Health as well as the Outcomes Framework, which will be monitored regularly to ensure that targets in Public Health are being met.

Following a public question in 2013 from Councillor Roger Copping, Warwick District Council which raised concerns about the Warwickshire Voluntary Transport Scheme, the Committee received a number of update reports from Public Health. The importance of these schemes within their communities was recognised and the effort made by Public Health to reach agreement across the county has been welcomed.

### 2014-15 O&S in numbers:

**37**

members sit on Overview and Scrutiny Committees  
**30%** of these sat on Task and Finish Groups

### 2014-15 O&S in numbers:

**5**

Task and Finish Group reviews

## Health

The Committee has an important role maintaining a check and balance on the performance of local health commissioners and providers whose services impact the lives of local residents.

### Key outcomes:



- A letter was submitted to the Health and Wellbeing Board outlining the Committee's ongoing concerns around the financial sustainability of the George Eliot NHS Hospital Trust. The Quality Account Task and Finish Group for the George Eliot Hospital will continue to focus on quality assurance and patient safety.
- Close performance monitoring of the Coventry and Warwickshire Partnership Trust (CWPT). In July, the West Midlands Quality Review Service was commissioned to undertake a review of the Children and Adolescent Mental Health Service (CAHMS) which identified a number of "immediate risks to clinical safety or clinical outcomes" at Tier 3 Specialist CAMHS. These were issues that had been highlighted by the Committee for some time and, in response to the review, the Committee called in representatives from the Coventry and Rugby Clinical Commissioning Group, CWPT and the two Trusts identified in the report (South Warwickshire Foundation Trust and University Hospitals Coventry and Warwickshire). Updates on the implementation plan for improvement from this review were reported regularly to the Committee.
- In line with the health scrutiny powers of the Committee, the Coventry and Warwickshire Partnership Trust consulted the Committee on changes within their Rehabilitation and Recovery Pathway, particularly in relation to St. Michael's Hospital.

### Key health organisations monitored by the Committee:

Coventry and Rugby CCG  
North Warwickshire CCG  
Warwickshire South CCG  
Coventry and Warwickshire Partnership Trust  
George Eliot NHS Hospital Trust  
South Warwickshire Foundation Trust  
University Hospitals Coventry and Warwickshire  
West Midlands Ambulance Service

### Key partners that the Committee engages with, as part of its business:

NHS England  
West Midlands Regional Health Scrutiny Group  
Care Quality Commission  
District/Borough Councils  
Healthwatch Warwickshire  
Healthwatch Coventry  
Coventry City Council Health and Social Care Scrutiny Board  
Arden Commissioning Support Unit

## Transition of Mental Health Services

In 2012, Warwickshire LINk commissioned Warwickshire Children and Voluntary Youth Services (WCVYS) to carry out a project with young people to give them a say on health and social care. The final report – ‘Giving Young People a Voice in Health and Social Care’ – identified that there were inconsistencies in the transition of young people from CAMHS to adult mental health services and that “high quality service provision at the point of transition increases the likelihood of young people developing their full potential, including good overall well-being and staying engaged with education, employment or training. This is associated with improved mental health and increased resilience for transition to adulthood”.

In response to this, the Committee formed a joint Task and Finish Group with the Children and Young People Overview and Scrutiny Committee to look at transitions of mental health services. The members of the Task and Finish Group were Councillors Peter Morson (Chair of the Task and Finish Group), John Beaumont, Chris Clark, Bob Hicks, Peter Fowler and Jerry Roodhouse. Two representatives of Healthwatch Warwickshire – Jen Cook and Deb Saunders – were also appointed to the Group.

## NHS Trusts and Quality Accounts

The Quality Accounts Task and Finish Groups again worked closely with the following NHS Trusts on quality assurance. This year for the first time a joint meeting of all the Task and Finish Groups has taken place to look at complaints, with each of the Trusts briefing the Groups on how they manage formal complaints, what is done to get early resolution, how Trusts are able to demonstrate that they are using complaints to improve services and identifying areas of good practice. The Warwickshire County Council Complaints Officer also attended the meeting.



### Key outcomes:

- A number of methods were used to gather evidence, including meeting with a broad range of stakeholders, an electronic survey and a number of stakeholder events across the county. In addition, evidence was gathered from a range of youth groups such as Young Minds and the Youth Parliament, and other published data on mental health of children and young people.
- The voice of young people, the community and the voluntary sector was heard throughout the process with the assistance of the Warwickshire Children and Voluntary Youth Services.
- The Task and Finish Group produced a final report, with ten recommendations, which has been sent to the commissioners, providers, Cabinet and the Health and Wellbeing Board for their agreement and implementation.
- The report forms part of the evidence being used to redesign the Children and Adolescent Mental Health Services across Warwickshire and Coventry. The spotlight that the Committee has kept on the CAMHS service since 2010 has provided the impetus for change that lies behind the redesign.



## Working with the Health and Wellbeing Board (HWBB)

The Committee receives updates from the Chair of the Health and Wellbeing Board, and the Chair attends Health and Wellbeing Board meetings, which, in line with the Memorandum of Understanding, ensures that there is no duplication and the different roles remain clear.

## Regional Health Scrutiny

Discussions are being held at regional level about the scope for setting up a joint Health Scrutiny Committee to consider NHS reconfigurations that impact people across Local Authority boundaries. There has also been an ongoing discussion at Regional Level on how best to hold the West Midlands Ambulance Service to account at a regional level.

## Looking ahead...

The Committee has monitored the increased winter pressure situation on NHS Trusts, receiving regular updates from both Social Care and the Trusts. The Committee will be holding a Select Committee in the early summer to consider the Pressures on Hospitals, bringing together witnesses from both acute and primary care, the West Midlands Ambulance Services, Clinical Commissioning Groups, social care and the community sector to look at the analysis of winter pressures, what has gone well, barriers and best practice. This will include issues such as seven day working across the health and social care sector.

### **Quote from the Chair, Councillor Maggie O'Rourke**

"The Health and Adult Social Care OSC is a particularly demanding OSC, and one that becomes increasingly important as we and our partners navigate our way through this period of financial austerity, whilst ensuring that patient and customer safety and quality services remain a focus. I would like to thank my Committee for their support and hard work, and both our senior officers and those from our partner organisations who we work closely with to find early solutions."

# 3

## Children and Young People Overview and Scrutiny Committee

Committee meetings during 2014/15 have been extremely busy with members considering many agenda items at each session. Throughout the municipal year the Committee has covered a range of agenda items, scrutinising the provision of public services in Warwickshire relating to areas such as child protection, 16-19 years education and family support to name but a few.



## Super Priority Areas

In April 2014, the Committee expressed concerns regarding the consultation timescale and communication on the proposed schools admission arrangements for the academic year 2015/16. A Task and Finish Group was appointed (Councillors O'Rourke, Redford, Rickhards and Whitehouse) to consider a wide range of information to establish whether a Super Priority Area (SPA) would address the issue of sibling displacement. The Group's primary aim was to examine the principle and feasibility of the establishment of SPAs across urban areas of Warwickshire, with the initial focus being on Leamington and Warwick.

## Special Educational Needs and Disabilities

### (SEND) for Children and Young People

The Committee held a special meeting to in August consider the proposed Reform Plan and Local Offer for children and young people with special education needs or disabilities which had been subject to a public consultation exercise during June 2014.

#### Key outcomes:

- After consideration of the collected evidence, the Group submitted its final report and three recommendations to Cabinet. This included the proposal to run a two-year pilot in Warwick and Leamington based on enhanced sibling priority within the schools admissions system. This recommendation was not supported by the Cabinet; however, Cabinet did agree not to pursue the SPA in Warwickshire.
- Effective use of the Task and Finish approach to liaise with external partners, individuals and groups provided Cabinet with an informed position from which to take their decision.
- Despite taking the decision not to establish a SPA, the Portfolio Holder for Education and Learning re-emphasised the Council's commitment to working with parents and carers to place children in a school of their choice wherever possible.

#### Key outcomes:

- The Committee submitted five recommendations to Cabinet for them to consider, as part of their decision-making process regarding the future Local Offer. All of the recommendations were noted by Cabinet, with a commitment made from the Committee to continue to scrutinise the progress of the Local Offer.
- The Committee made a commitment to receive periodic updates on the Council's performance on implementing the SEND reforms. Any issues identified by the Committee are likely to be raised with Cabinet and/or the Council to ensure that progress remains on track.
- At its April meeting, the Committee received a further update on the outcome of the consultation regarding the proposed reorganisation of the IDS (Integrated Disability Service), which was subject to public consultation. The Committee will review the future direction of travel after the consultation results have been analysed.

## Educational Achievement

During the course of the year, the Committee has closely monitored and scrutinised the educational achievements of children and young people in Warwickshire. Members have been monitoring the GCSE results achieved by pupils from across the county, the performance and improvements of Warwickshire's primary and secondary schools, how the County's academies and free schools are scrutinised, the educational provision available to pupils aged 14-19 and the development of new schools within the County.

This has been a challenging area for the Committee with the Department for Education regularly changing the requirements as to how schools must publish their examination results. Another important area of work covered by the Committee this year was the reporting of NEET ('not in education, employment or training') young people residing in Warwickshire.



### Key outcomes:

- A key aim of the Committee moving forward is to closely monitor the number of people aged 16-19 to ensure they are heading to positive destinations following completion of their secondary education, improving their life chances.
- The Committee remains committed to improving the links and working relationships between the Council and academies and free schools and will closely monitor the educational performance of schools from across the County.

## Child Sexual Exploitation

Child Sexual Exploitation (CSE) became headline news in September 2014 following the publication of the Professor Alexis Jay report into CSE in Rotherham. Since then, further reports regarding CSE have been published and reports of CSE across the country have increased. This is one area of criminal activity that Warwickshire cannot be complacent about. In March, a Select Committee was established inviting the key partners (including the County Council) on the Warwickshire Safeguarding Children Board to provide an overview of how they are responding to the recommendations outlined in the Jay report.

The partners explained how they are working both independently, and collectively, to prevent, identify and tackle CSE in Warwickshire. The Warwickshire Police and Crime Commissioner also addressed the Committee.



### Key outcomes:

- The Committee acknowledged the excellent work which had been undertaken by partner organisations and was reassured by recent activity in Warwickshire.
- The importance of specific CSE training for schools governors and staff was emphasised, which will be taken forward by the Portfolio Holder for Education and Learning.
- A key request for Cabinet to issue a statement of intent regarding the development of a Multi-Agency Safeguarding Hub (MASH) for Warwickshire.
- Seven recommendations regarding raising awareness of CSE and the development of a Multi-Agency Safeguarding Hub (MASH) have been submitted to Portfolio Holders.



## Looking ahead...

As meetings continue, the Committee shall be taking part in reviewing the redesign of the Council's Home to School Transport policy, monitoring the academic performance of Warwickshire's children and young people and continue to review the work of children's services to ensure that the children and young people of Warwickshire remain safe and protected from harm.

There is currently a great deal of work being undertaken by the Adult Social Care and Health Overview and Scrutiny Committee in relation to the proposed redesign of the Child and Adolescent Mental Health Services (CAHMS). As this work develops over the coming year, the Committee shall be keeping abreast of developments to ensure that the children and young people who receive mental health treatment are being provided with an appropriate service.

### **Quote from the Chair of the Committee, Councillor Bob Hicks**

"This year, the Children and Young People Overview and Scrutiny Committee has worked to a busy schedule, considering a variety of issues and policies which directly affect the children and young people of Warwickshire. Continuing budget cuts and diminishing resources have focussed member's minds on providing the best possible opportunities for all of our children and young people. Ensuring that our young people are safe, cared for and encouraged will assist them in striving to become the best they can be. The members of the Committee and I remain fully committed to achieving the best possible outcomes for our children and young people over the coming year and beyond."

**2014-15 O&S in numbers:**

**27**  
meetings





# 4

## Communities Overview and Scrutiny Committee

The Committee has a broad remit looking at public services in Warwickshire relating to fire and rescue, community safety, trading standards, transport and highways, economic development and environment, adult learning, libraries, heritage, tourism, flood risk management and emergency planning.





## Fire and Rescue

The key focus for this year was pre-decision scrutiny of the Operational Implications of the 2014/18 Budget. The Committee's recommendations were considered alongside other consultation responses by Cabinet in September, before final determination at the Council meeting.

### Key outcomes:

- Members acknowledged the clear and comprehensive report and the meaningful consultation, which resulted in substantial changes to the proposals.
- The Committee explored differences in the number of firefighters deployed at incidents in urban and rural areas.
- Regarding the recommendation to cease support for the Young Firefighters' Association, the Committee requested a delay to enable the assessment of a pilot scheme on alternate delivery arrangements. The Council agreed to extend the life of the Association to the end of March 2015.

## Safer Routes to Schools

Monitoring of the Council's Transport and Highways service has been a key part of the Committee's work in 2014/15. A scrutiny review was commissioned of Safer Routes to Schools and 20mph Initiatives with a specific remit to develop criteria, based on evidence, for the allocation of £2.5 million of funding in the capital budget, over a three-year period. The objective was to agree criteria which provide for the fair allocation of this and any subsequent capital allocations in the future.


Councillors John Horner (Chair), Corinne Davies, Bill Gifford and Keith Lloyd were appointed to the Task and Finish Group to undertake the review. This met between July and September and considered information from both existing sources and contributions from specialist officers, in formulating the criteria. The resultant report included recommendations to apportion the funding between safer routes to school and initiatives to reduce the speed of traffic through 20mph zones, with a further allocation for advisory signage. The recommendations were approved by both the Committee and Cabinet with minor modifications to the proportions of funding and qualification criteria.

### Key outcomes:

- Three recommendations were adopted by Cabinet with minor modifications.
- The Committee will undertake a further review of the allocation of resources for 20mph advisory speed limits (flashing signs) after June 2015.

### 2014-15 O&S in numbers:

**10**   
recommendations were  
submitted to Cabinet

**8**   
of these were agreed  
by cabinet

## Bus Fares

A motion referred from Council stimulated a review of bus fares in Warwickshire. The Committee was informed of the legislative constraints and the difficulties for the Council to influence the routes, timetables and fares set by bus operators. It was recognised that outside London, bus fares had consistently risen above the rate of inflation. Cabinet agreed to the Committee's recommendation to make representations to the Secretary of State for Transport, to express growing concern about the unaffordability of bus travel in Warwickshire.

### Key outcomes:

- Members gained a detailed understanding of the difficulty the Council has in influencing the routes, timetables and fares set by bus operators.
- Cabinet approved the recommendation to lobby the Secretary of State for Transport.

## Economic Development

The Committee reviewed the Pride in Camp Hill (PinCH) Regeneration Project. PinCH is a multi-faceted programme delivering transformational change to improve the physical, economic and social environment of this area of Nuneaton. The project has involved the relocation of residents, provision of a new retail centre and a new community building. Comparative data was provided on indicators for educational attainment, teenage conception, unemployment, crime and satisfaction with the local area. There are signs of improvement, particularly in educational attainment, lower teenage pregnancy rates and reductions in reported crime levels. The need for continued work on social and economic regeneration was recognised.

### Key outcome:

- The Committee appointed a member group which will revisit the project's master plan, examine the progress made and then report to Cabinet, with recommendations on future actions for the next 10 to 15 year period.

## Looking ahead...

The Committee will refresh its work programme for the year ahead. Review areas for 2015/16 will include the outcome of a current Task and Finish review to develop an Energy Plan for Warwickshire. Also scheduled are transport and highway updates for Part-Night Street Lighting and a review of the Warwickshire Waste Strategy Implementation Plan.

### Quote from the Chair, Councillor Richard Chattaway:

"The Communities OSC has a broad remit. In addition to the reviews reported here, it has considered Trading Standards, Part-Night Street Lighting, the Consultation Plan for Voluntary Sector Support Services and the Adult and Community Learning Service. The work on Safer Routes to Schools was particularly valuable, with the recommendations made by the Task and Finish Group being approved by Cabinet. I would like to record my appreciation to Committee members for their contributions over the year and thank the officers who have reported to the Committee".

## 5

## Corporate Services Overview and Scrutiny Committee

The Committee continues to review and monitor a variety of Council functions within its remit to ensure that best practice and value is at the heart of service provision. By scrutinising the internal functions, performance can be monitored and new ways of working can be identified which can help the Council to continue to deliver services whilst operating under financial constraints.



## County Farms and Smallholdings Strategy 2010 – 2025

The Committee undertook a number of site visits to smallholdings across Warwickshire to get a better understanding of how they operate and to hear, first-hand, the experiences of tenants. The visits gave the Committee the opportunity to assess how the policy informed practice and whether the policy was assisting the authority in reaching its objectives for smallholdings. With this in mind, a report was considered at the Committee meeting held in September to consider the existing policy and help inform some of the priorities the policy needed to address going forward.



### Key outcome:

- The evaluation of existing policy to ensure it was fit for purpose and help the Council achieve long term aims with regard to the rural economy.

## Warwickshire County Council Property Protocols and Peppercorn Rents

The Committee considered the protocols and procedures currently in place for the identification and disposal of authority buildings. It also looked further at the buildings which were subject to peppercorn rents. In doing so, the importance of Social Value was highlighted, especially in these times of financial austerity. Many community groups and third sector organisations provide services for the community and one of the ways in which the Council supports them is by charging them nominal fees, in some instances peppercorn rents, for using authority-owned buildings as a base to provide these services.



### Key outcomes:

- Many peppercorn rents will soon be coming to the end of their terms; therefore the Committee asserted the importance of looking at and monitoring the protocols at this stage in order to identify what support the Council can provide for these organisations and groups.
- Enhanced pre-decision scrutiny with the opportunity to engage at an early stage to influence and assist policy.

## Client Information Systems

Following a meeting of the Council in December 2013, the Committee was asked to monitor the procurement of IT systems for the People Group. It was important, due to the nature and complexity of the system, that it was up and running by the deadline.



### Key outcome:

- The Committee was invited by the Portfolio Holder to monitor the process to ensure that the review was on schedule and remained within budget.



## The Future...

Following the Overview and Scrutiny work programming event, the Committee considered the ideas of Councillors, members of the public and officers, to help shape and look at areas which had been identified..

For 2015/16, the following areas have been identified:

- Law and Governance and;
- Communications and Marketing.

In addition to these areas, the Committee will continue to monitor and undertake more in-depth work, if appropriate, with regard to Smallholdings and Libraries/Community Buildings and Peppercorn rents.

### Quote from the Chair, Councillor June Tandy:

“The Committee continues to monitor performance of internal services to ensure that in these times of budget pressures, we are operating efficiently and effectively, supporting other services within the Council to provide services for our communities. We encourage scrutiny involvement at all stages of the decision making process including that of pre-decision for informed and transparent decision making. Going forward, budget pressures will remain a key factor for consideration, however, services will need to be resilient and continue to provide a best value service for the people of Warwickshire.”

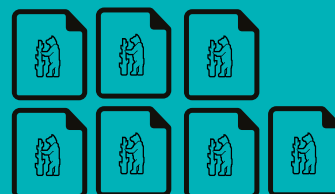
#### 2014-15 O&S in numbers:



**80%** of recommendations aimed to improve services for the public



**20%** of recommendations aimed to improve internal procedures



**7** recommendations resulted in policy change

# 6 Meet the Members

## Adult Social Care and Health OSC

This Committee reviews and scrutinises social care for older people and people with disabilities, policies and services for safeguarding adults, and health services for adults and children in Warwickshire.



**Councillor Maggie O'Rourke**

*Chair of the Adult Social Care and Health Overview and Scrutiny Committee*

*Committee Members:*

Councillor Chris Clark  
Councillor Mike Gittus  
Councillor Martin Heatley  
Councillor Keith Lloyd  
Councillor Mike Perry  
Councillor Caroline Phillips  
Councillor Wallace Redford  
Councillor Kate Rolfe  
Councillor Mary Webb

*Co-opted Members:*

Councillor Belinda Garcia  
Councillor Michael Kinson  
Councillor George Mattheou  
Councillor Derek Pickard  
Councillor Chris Watkins

---

## Children and Young People OSC

This Committee reviews and scrutinises services relating to education and skills for children, young people, and families. This includes schools, 16-19 years education, child protection, family support, social care, children with specific needs, and the Youth Service.



**Councillor Bob Hicks**

*Chair of the Children and Young People Overview and Scrutiny Committee*

*Committee Members:*

Councillor Mike Brain  
Councillor Jonathan Chilvers  
Councillor Julie Jackson  
Councillor Dave Parsons  
Councillor Dave Shilton  
Councillor Jenny St. John  
Councillor Angela Warner  
Councillor John Whitehouse  
Councillor Chris Williams

*Co-opted Members:*

Dr. Rex Pogson, Church Representative  
Joseph Cannon, Church Representative  
John McRoberts, Parent Governor

## Communities OSC

This Committee reviews and scrutinises a wide-range of services to the general public including Fire and Rescue, community safety, flood risk, trading standards, transport and highways, economic development, the environment, libraries, heritage, and tourism.



**Councillor Richard  
Chattaway**

*Chair of the Communities Overview  
and Scrutiny Committee*

### *Committee Members:*

Councillor Sarah Boad  
Councillor Corrine Davies  
Councillor Yousef Dahmash  
Councillor Jenny Fradgley  
Councillor Mike Gittus  
Councillor John Horner  
Councillor John Holland  
Councillor Philip Johnson  
Councillor Wallace Redford

---

## Corporate Services Overview and Scrutiny Committee

The Committee scrutinises a range of corporate areas, such as the budget, financial plans, property, and workforce strategy.



**Councillor June Tandy**

*Chair of the Corporate Services Overview  
and Scrutiny Committee*

### *Committee Members:*

Councillor John Appleton  
Councillor Nicola Davies  
Councillor Neil Dirveiks  
Councillor Peter Fowler  
Councillor Keith Kondakor  
Councillor Keith Lloyd  
Councillor Phillip Morris-Jones  
Councillor Chris Saint  
Councillor Alan Webb

# 7 Looking Ahead

Next year will bring with it many changes, not least the outcome of the General Election, but also the changes that are expected in terms of partnership arrangements around service delivery, resources and decision-making. At a national level, the Communities and Local Government Committee, Public Accounts Committee and National Audit Office have all emphasised the need for accountability and scrutiny within local partnership arrangements. Decision-making and the integration of services across these partnerships will need to be reviewed in terms of governance, including the role of overview and scrutiny.

Both the Alexis Jay Report (into Child Sexual Exploitation) and the Robert Francis Report (into the failings at the Mid-Staffordshire Hospital) highlighted the risks of weak overview and scrutiny and the variability of effective scrutiny.

Warwickshire County Council faces all of these challenges, with a shift towards becoming a commissioning authority and taking the opportunity of sharing services where possible and appropriate. Elected members are at the early stages of exploring other models of governance, such as Combined Authorities and Economic Prosperity Boards. Partnerships or larger geographical models of governance can increase the challenge of public engagement in decision-making and therefore it is important that the national focus on transparency and accountability is continued locally.

In addition to the future areas already highlighted throughout this report, the Overview and Scrutiny Committees will need to monitor the delivery of the Council's One Organisational Plan and, where appropriate, consider the impact of service redesigns.

## 2014-15 O&S in numbers:

**28%**

of Cabinet decisions  
were subject to  
pre-decision scrutiny



# 8 Getting Involved

You can keep up to date with the work of the Overview and Scrutiny Committees and Task and Finish Groups by visiting our website [www.warwickshire.gov.uk/scrutiny](http://www.warwickshire.gov.uk/scrutiny) or our blog at [www.warksdemocracy.wordpress.com](http://www.warksdemocracy.wordpress.com)

Listening to the views of local residents is an important part of the work of Overview and Scrutiny. If you have any questions about scrutiny or if you want to bring an issue to the attention of Councillors you can contact the Democratic Services team:

Democratic Service  
Warwickshire County Council  
PO Box 9, Shire Hall  
Warwick, CV34 4RL  
Tel: **01926 413747**

Email: [democraticservices@warwickshire.gov.uk](mailto:democraticservices@warwickshire.gov.uk)

Web: [www.warwickshire.gov.uk/scrutiny](http://www.warwickshire.gov.uk/scrutiny)

[www.warksdemocracy.wordpress.com](http://www.warksdemocracy.wordpress.com)

## 2014-15 O&S in numbers:

**2** 

### call-ins:

Disposal of Bath Place and  
Commissioning of  
Domiciliary Care